

## **French Embassy in Tokyo, designed by ADPI, wins AIA (American Institute of Architects) award**

On 12 October, the French Embassy in Tokyo, Japan, won the 2012 AIA (American Institute of Architects) North-West and Pacific Region award. This prestigious award recognizes the embassy design developed by ADPI (Aéroports de Paris Ingénierie), a subsidiary of Aéroports de Paris.

Designed by ADPI architects, with Pierre-Michel Delpuech and Dominique Chavanne as chief architects of the project, and developed and built by the company Takaneka as part of the Franco-Japanese consortium MINTAK<sup>1</sup>, this building, opened in December 2009, had already received the 2011 Japanese BCS (Building Contractors Society) Award. This award jointly recognises the clients, architects, design offices and builders among 15 particularly outstanding projects.

This new award was presented at the annual AIA Arizona Conference, held by the Western Mountain / Northwest and Pacific regions.



### **For Guillaume Sauvé, CEO of ADPI:**

*"In designing this embassy, ADPI was able to deploy its architectural skills while capitalising on its expertise in workflow management and safety systems for complex building projects. This project and the Europa House in Tokyo, also designed by ADPI teams, are a glowing endorsement of our expertise."*

### **For Dominique Chavanne, Chief Architect of ADPI:**

*"This new U.S. award recognises a project designed by the French and carried out by the Japanese, in Japan... The blueprints were developed to achieve fluidity in movement, to create a feeling of space, independence and user-friendliness"*

---

<sup>1</sup> The MINTAK consortium brings together Mitsui and Nomura (investor-promoter), ADPI (prime contractor for design), Takenaka (prime contractor for studies, construction) and Kume (prime contractor for supervision).



**AÉROPORTS DE PARIS**

*The world is our guest*

**Press release**

**A contemporary building with broken lines blending harmoniously into green spaces**



ADPI's architects designed the building so that it would blend harmoniously into a densely wooded park with steep slopes.

The Embassy extends along the park and consists of several blocks with broken lines linked by a common thread: a living wall.

Overlooking the street, a first building houses the access control system and the visa section.

The main building, inside the park, consists of three sharp-angled shapes built around a central patio.

The patio is accessed via an internal passageway, lined with a living wall and covered with a transparent canopy that respects the natural contours of the land, overlooking the park.

The broken and contrasting lines that characterise the building can also be found in the design of the façades: open, transparent and bright on the northern side, overlooking the park; enclosed and inorganic on the southern side, in particular for privacy from close neighbours.





**AÉROPORTS DE PARIS**

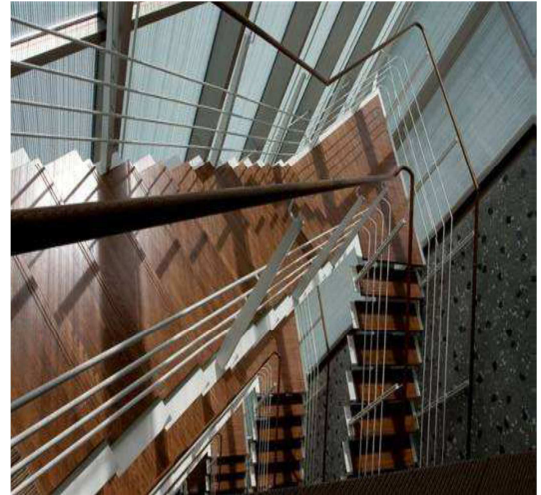
*The world is our guest*

Press release

### A building meeting the highest environmental standards



© ADPI

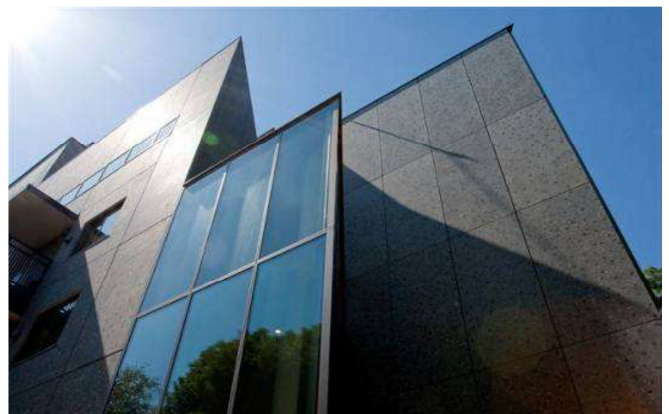
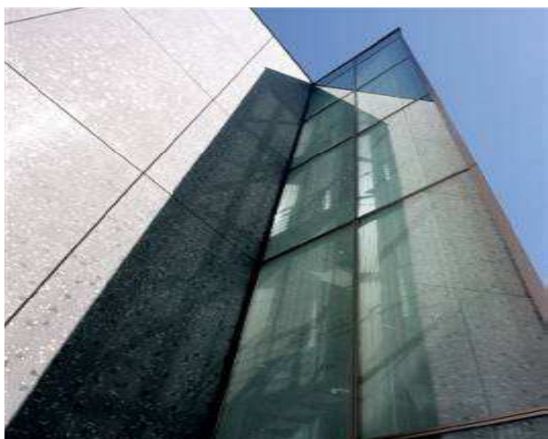


At the heart of the central building is a hall which, in the form of a vertical atrium open on four stories, provides access to the different departments of the embassy as well as promoting good visual communication between them. The atrium design allows it to retain heat in winter and to keep the building cool in summer.

Finally, the embassy meets the strictest environmental standards: the building complies with the highest French High Environmental Quality (HQE) standard and was designed in compliance with the Japanese CASBEE standard (Comprehensive Assessment System for Building Environmental Efficiency). It has therefore been equipped with a very efficient insulation system, green roofs, a rainwater collection system, equipment to monitor energy consumption, etc.

### Key facts about the project:

- Area: 8,500m<sup>2</sup>
- Construction costs: €25M
- Partner: Takenada Design office
- Client: Ministry of Foreign Affairs



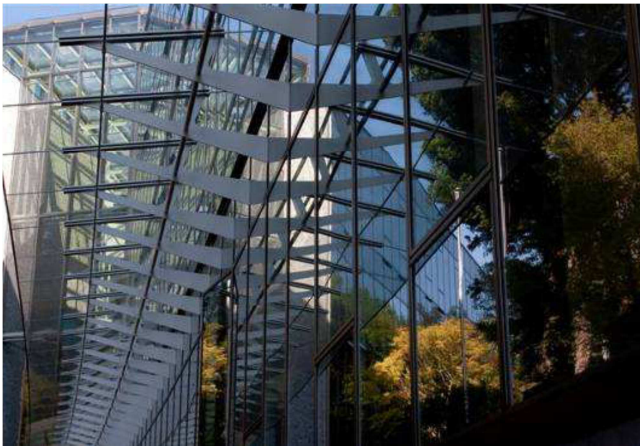


**AÉROPORTS DE PARIS**

*The world is our guest*

Press release

**Photos Copyright © ADPI on request:**



#### **More information on ADPI**

A wholly-owned subsidiary of Aéroports de Paris, ADPI is a French engineering company which is involved, on an international level, in architectural activities, major regeneration projects (airports, urban expansion) and complex building projects (airport terminals, stadiums, high-rise towers, theatres etc.).

ADPI can also act in a Consultancy, Project Manager or Assistant Project Manager role. The ADPI teams are involved in projects from the initial design stages until completion.

ADPI brings together a multiplicity of skills with its engineers, architects, design specialists and construction supervisors, to deliver services that combine realism with creativity.

Formed in 2000, ADPI is currently engaged in more than 100 projects worldwide. The company reported revenue of €74 million for 2011.

For more information on ADPI [www.adp-i.com](http://www.adp-i.com)

[www.aeroportsdeparis.fr](http://www.aeroportsdeparis.fr)

**Press contact:** Christine d'Argentré + 33 1 43 35 70 70 – **Investor Relations:** Florence Dalon + 33 1 43 35 70 58

Aéroports de Paris builds, develops and manages airports including Paris-Charles de Gaulle, Paris-Orly and Paris-Le Bourget. In 2011, Aéroports de Paris handled more than 88 million passengers and almost 2.5 million tons of freight and mail in Paris and 40 million passengers in airports abroad.

With an exceptional geographic location and a major catchment area, the Group is pursuing its strategy of adapting and modernizing its terminal facilities and upgrading quality of services, and also intends to develop its retail and real estate business. In 2011, the group revenue stood at €2,502 million and the net income at €348 million.

Registered office: 291, boulevard Raspail, 75014 Paris A French limited company (Société Anonyme) with share capital of 296, 881,806 euros. 552 016 628 RCS Paris